

# RT10 RUGGED TABLET

---

Accessories Guide

---



**Honeywell**

# TABLE OF CONTENTS

- 2 RFID
- 3 Power and Batteries
- 3 Chargers
- 3 Docks and Cradles
- 4 Mounts
- 4 Miscellaneous



# RFID

RT10-RFID-HF

## RT10 HF RFID

High-frequency RFID reader. Snaps on to back of the tablet. Windows® only.

RT10-RFID-UHF

## RT10 UHF RFID Reader

Ultra-high frequency RFID reader. Snaps on to the back of the tablet. Windows only.

RT10-CAC

## RT10 Smart Card Reader

Smart card reader. Snaps on to the back of the tablet. Windows only.

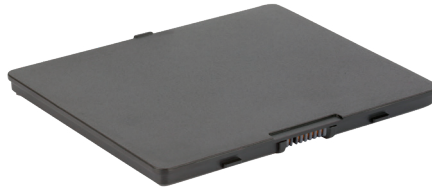
# POWER AND BATTERIES



RT10-PWR

## RT10 Power Adapter

Spare power adapter. 100–240V AC to 19V DC at 3.42A. Requires country-specific cord.



RT10-BAT-STD1

## RT10 Standard Battery

Spare standard battery. 7.4V, 5140 mAh Li-Polymer battery. 276 g (9.7 oz) weight, 11 mm (0.4 in) thick.



RT10-BAT-EXT1

## RT10 Extended Battery

Spare extended battery. 7.4V, 10280 mAh Li-Polymer battery. 474 g (16.7 oz) weight, 16.5 mm (0.6 in) thick.

# CHARGERS



RT10-BC-2

## RT10 2-Bay Battery Charger

2-bay battery charger for standard or extended batteries. 12–19V DC in power. Standard battery charges in 3 hours, extended battery charges in 6 hours.

**Kit includes:** 1x 2-bay battery charger, 1x 19V AC adapter. Requires country-specific cord.

RT10-BC-4

## RT10 4-Bay Battery Charger

4-bay battery charger for standard or extended batteries. 12–19V DC in power. Standard battery charges in 3 hours, extended battery charges in 6 hours.

**Kit includes:** 2x 2-bay battery charger, 1x 19V AC adapter. Requires country-specific cord.

RT10-BC-6

## RT10 6-Bay Battery Charger

3-bay battery charger for standard or extended batteries. 12–19V DC in power. Standard battery charges in 3 hours, extended battery charges in 6 hours.

**Kit includes:** 3x 2-bay battery charger, 1x 19V AC adapter. Requires country-specific cord.



RT10-MC

## RT10 Vehicle Charger with Cigarette Header

Vehicle charger/cigarette lighter adapter. 11–32V DC in, 19V/3.42A DC out.

# DOCKS AND CRADLES



RT10-CD

## RT10 Office Communications Dock

Desk dock, 12–19V DC power supply.

**Ports:** 2x USB 2.0 side, 2x USB 2.0 rear, RS-232, 1x RJ45 Ethernet, VGA, RT10 pogo-pin dock connector.



RT10-VD

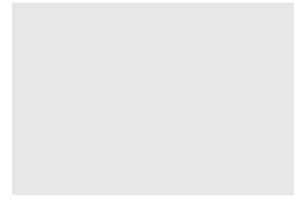
## RT10 Vehicle Dock with Power Cable

Vehicle dock, 3-pin terminal block 9–36V power supply. Easy insert and release with key-lock.

**Ports:** 4x USB-A, 1x RS-232, 1x RJ45 Ethernet, 1x GPS antenna, RT10 pogo-pin dock connector.

75 mm x 75 mm (2.95 in x 2.95 in) VESA mount.

**Vibration:** MIL-STD-810G, 5–500 Hz, 2.24G.

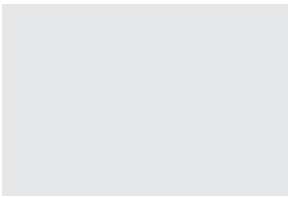


RT10-VC

## RT10 Vehicle Cradle

Vehicle cradle – power only. 3-pin terminal block 9–36V power supply. Easy insert and release with key-lock. RT10 pogo-pin dock connector. 75 mm x 75 mm (2.95 in x 2.95 in) VESA mount.

**Vibration:** MIL-STD-810G, 5–500 Hz, 2.24G.



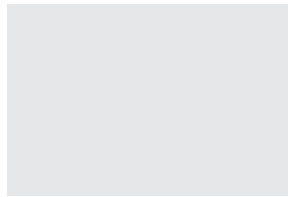
RT10-VC

## RT10 Vehicle Cradle

Vehicle cradle – power only. 3-pin terminal block 9–36V power supply. Easy insert and release with key-lock. RT10 pogo-pin dock connector.

75 mm x 75 mm (2.95 in x 2.95 in) VESA mount.

**Vibration:** MIL-STD-810G, 5–500 Hz, 2.24G.



RT10-EVD

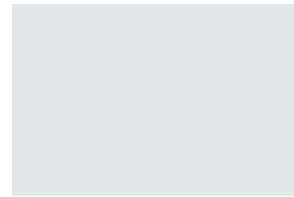
## RT10 Enhanced Vehicle Dock

Vehicle dock, VM compatible 10–60V power supply. Easy insert and release with key-lock.

**Ports:** 4x USB-A, 1x RS-232, 1x D-9 USB, 1x D-15 USB, RT10 pogo-pin dock connector.

75 mm x 75 mm (2.95 in x 2.95 in) VESA mount.

**Vibration:** MIL-STD-810G, 5–500 Hz, 2.24G.

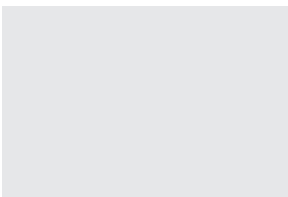


RT10-EVC

## RT10 Enhanced Vehicle Cradle

Vehicle cradle – power only. Vehicle-mount compatible 10–60V power supply. Easy insert and release with key-lock. RT10 pogo-pin dock connector. 75 mm x 75 mm (2.95 in x 2.95 in) VESA mount.

**Vibration:** MIL-STD-810G, 5–500 Hz, 2.24G.

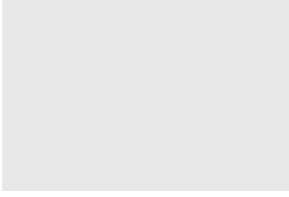


RT10-DD

## RT10 Display Dock

Display dock for connecting to external monitor. Ports: 1x RJ45 Ethernet, 3x USB-A, 1x HDMI, RT10 pogo-pin dock connector.

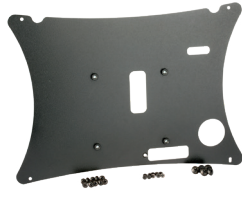
# MOUNTS



RT10-MNT-RAM

## RT10 Mounting Kit

Connects to a RAM mount.



RT10-MNT-VS

## RT10 VESA Mount

75 mm x75 mm (2.95 in x 2.95 in) VESA mount kit. SGCC-grade steel. Includes 5x M4 6 mm (0.2 in) round screws, 5x M3 5 mm (0.2 in) round screws.

# MISCELLANEOUS



RT10-HS-1

## RT10 Hand Strap

Hand strap kit including screws. Adjustable for standard or extended battery sizes.



RT10-SS-1

## RT10 Shoulder Strap

Shoulder strap kit including screws. Adjustable cross-body strap with pad.



RT10-CASE

## RT10 Carrying Case

Carry bag with hand carrier and adjustable shoulder strap. Separate pocket for accessories.



RT10-STY-1

## RT10 Capacitive Stylus with Tether

Replacement capacitive stylus with tether.

**For more information**

[www.honeywellaidc.com](http://www.honeywellaidc.com)

**Honeywell Safety and  
Productivity Solutions**

9680 Old Baires Road

Fort Mill, SC 29707

800-582-4263

[www.honeywell.com](http://www.honeywell.com)

RT10 Rugged Tablet Accessories Guide | Rev A | 03/20  
© 2020 Honeywell International Inc.

**THE  
FUTURE  
IS  
WHAT  
WE  
MAKE IT**

---

**Honeywell**